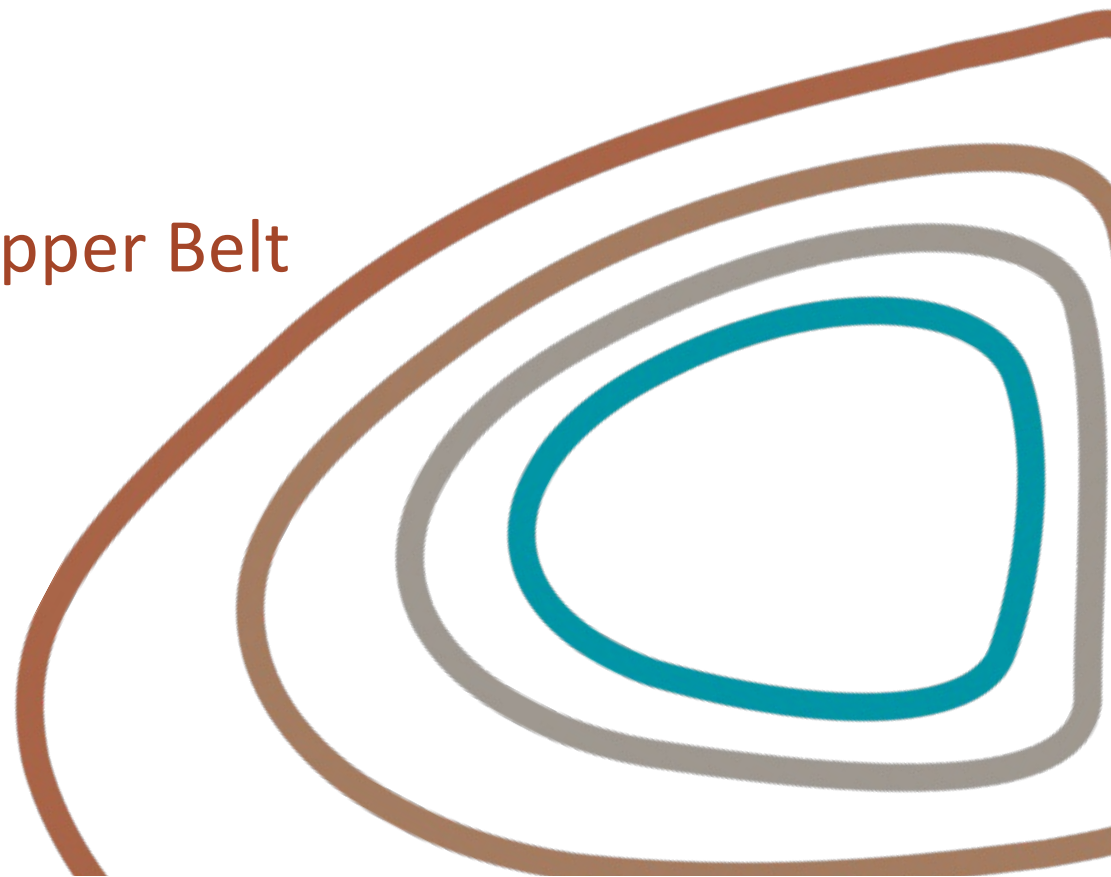




KANYE

RESOURCES

Drill ready in the Kalahari Copper Belt



Disclaimer



This presentation (“Presentation”) has been prepared by Kanye Resources plc and Kanye Resources Limited (“Kanye” or “Company”) and is provided solely for information purposes.

By viewing or attending this Presentation, you agree to be bound by the following conditions:

- This Presentation is not a prospectus or disclosure document and does not constitute or form part of any offer or invitation to sell or issue, or any solicitation of any offer to purchase or subscribe for, any securities or an inducement to enter into any investment activity, nor shall any part or all of this Presentation form the basis of, or be relied on in connection with, any contract or investment decision in relation to any securities.
- The information contained in this Presentation has not been independently verified. The Company does not make any representation or warranty, express or implied, as to the fairness, accuracy, correctness or completeness of the information, opinions and conclusions contained in this Presentation.
- To the maximum extent permitted by law, the Company and its related bodies corporate and affiliates, and their respective directors, officers, employees or agents, disclaim any liability (including, without limitation, any liability arising out of fault or negligence) for any loss or damage arising from any use of the information contained in this Presentation, including any error or omission, or otherwise arising in connection with it.
- The information in this Presentation is subject to change without notice. Subject to any obligations under applicable law, the Company does not undertake any obligation to update any information in this Presentation.

Exploration Target statement

The potential quantity and quality of the exploration targets identified in this Presentation are conceptual in nature, and there has been insufficient exploration to date to define a mineral resource in accordance with the Australasian Code for Reporting of Mineral Resources and Ore Reserves published by the Joint Ore Reserves Committee (“JORC Code”). Furthermore, it is uncertain if further exploration at its exploration targets will result in the determination of a mineral resource.

Forward-looking statements

This Presentation contains forward-looking statements which are identified by words such as ‘may’, ‘could’, ‘believes’, ‘estimates’, ‘targets’, ‘expects’, ‘intends’ and other variations of such words that involve risks and uncertainties.

These statements are based on an assessment of present economic and operating conditions, and on a number of assumptions regarding future events and actions that, at the date of this Presentation, are expected to take place.

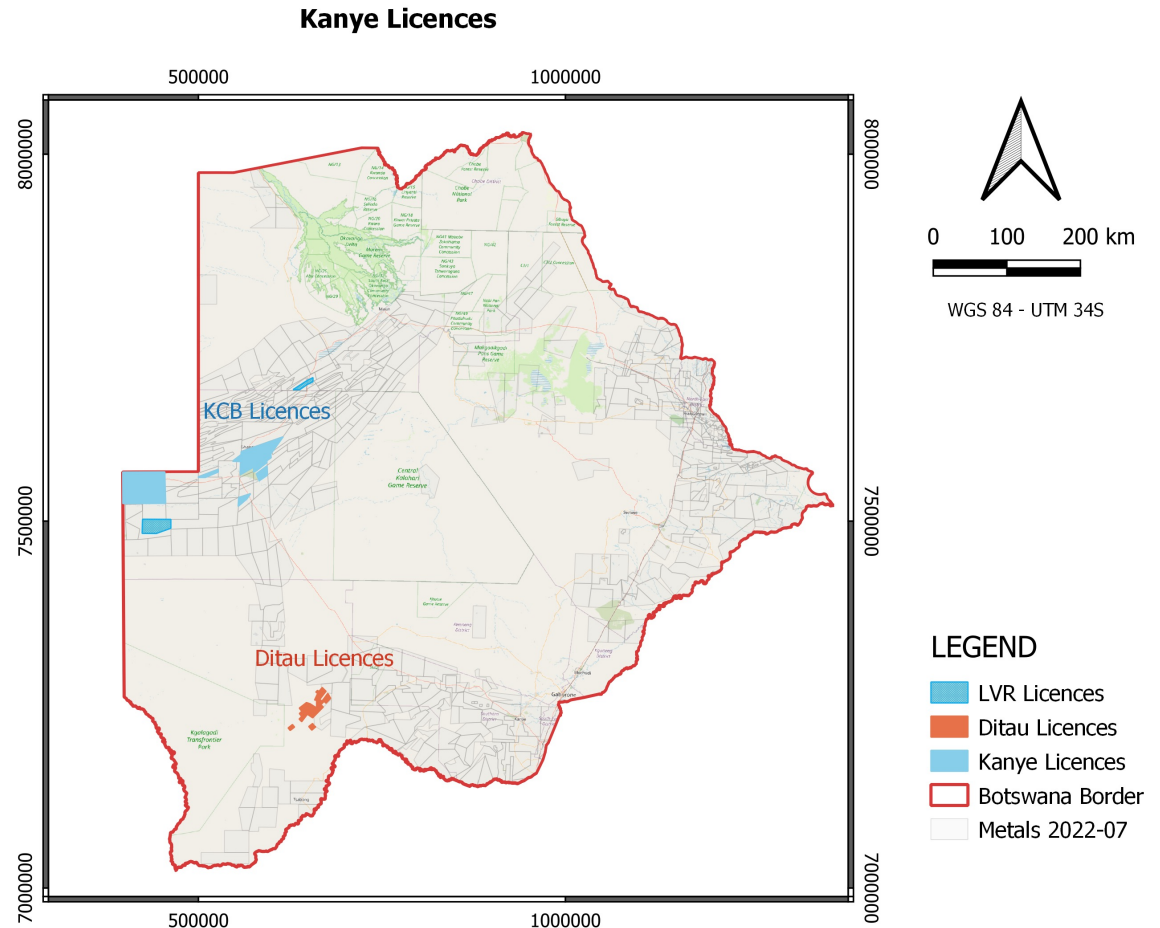
Such forward-looking statements are not guarantees of future performance and involve known and unknown risks, uncertainties, assumptions and other important factors, many of which are beyond the control of the Company. Actual results and developments may differ materially from those expressed or implied in such statements because of a number of factors, including uncertainty in estimating mineral resources due to the preliminary stage of the Company’s assessment of its projects, actual demand, price fluctuations, the ability to produce and transport products profitably, fluctuations in foreign currency exchange rates, operational problems, political risks, economic and financial market conditions in various countries and regions, industry competitors and activities by governmental authorities such as changes in taxation or regulation. The Company cannot and does not give any assurance that the results, performance or achievements expressed or implied by the forward-looking statements contained in this Presentation will actually occur and investors are cautioned not to place undue reliance on these forward-looking statements.

The Company does not intend to update or revise forward-looking statements, or to publish prospective financial information in the future, regardless of whether new information, future events or any other factors affect the information contained in this Presentation, except where required by law.

These forward-looking statements are subject to various risk factors that could cause the Company’s actual results to differ materially from the results expressed or anticipated in these statements.

Opportunity Overview

- Kanye Resources Limited is a 100% owned Botswana subsidiary of London listed Kavango Resources PLC
- Kanye has a 100% Botswana national workforce and is committed to Botswana
- Kanye holds 12 mineral exploration licences covering 5,642sq.km The projects cover
 - the **Kalahari Copper Belt (KCB)**, prospective for copper-silver, and
 - the **Ditau Project**, with potential for technology metals
- A JORC compliant Competent Person's Report, providing technical background on the Kanye projects, to be released
- A SAMREC compliant valuation report was completed on the company's properties in July 2022, and places a market value of \$8m on Kanye



Easy access to one of the largest mineral rights positions in Botswana, in highly prospective areas of the KCB

Property Package Overview



LATEST PROGRESS & NEXT STEPS

Kalahari Copper Belt (KCB) 5,257km²

Targeting significant copper-silver mineralization within one of the most prospective copper belts in the world

- 12 Prospecting Licences (100% ownership + 90% earn-in) covering 5,257km² (incl. 2 being added) within the burgeoning Kalahari Copper Belt
- Licences proximal to several near-term copper/silver producing mines owned by Sandfire Resources Ltd. (\$1B MCAP) and Cupric Canyon Capital (private equity owned)

9,677 sample soil program complete

Integration of geochemistry, new geological mapping, AEM, CSAMT

Drill ready

Ditau Project 1,386km²

Targeting technology metal potential from 12 alkali ring structures

- 2 Prospecting Licences covering 1,386km² over an area highly prospective for carbonatites & precious metals
- Airborne magnetic surveys have identified 12 ring structures within the property with diameters up to 11km
- Iron oxide rich unit seen in DITDD004 featuring anomalous copper and gold

1,600 m drill program completed June 2022

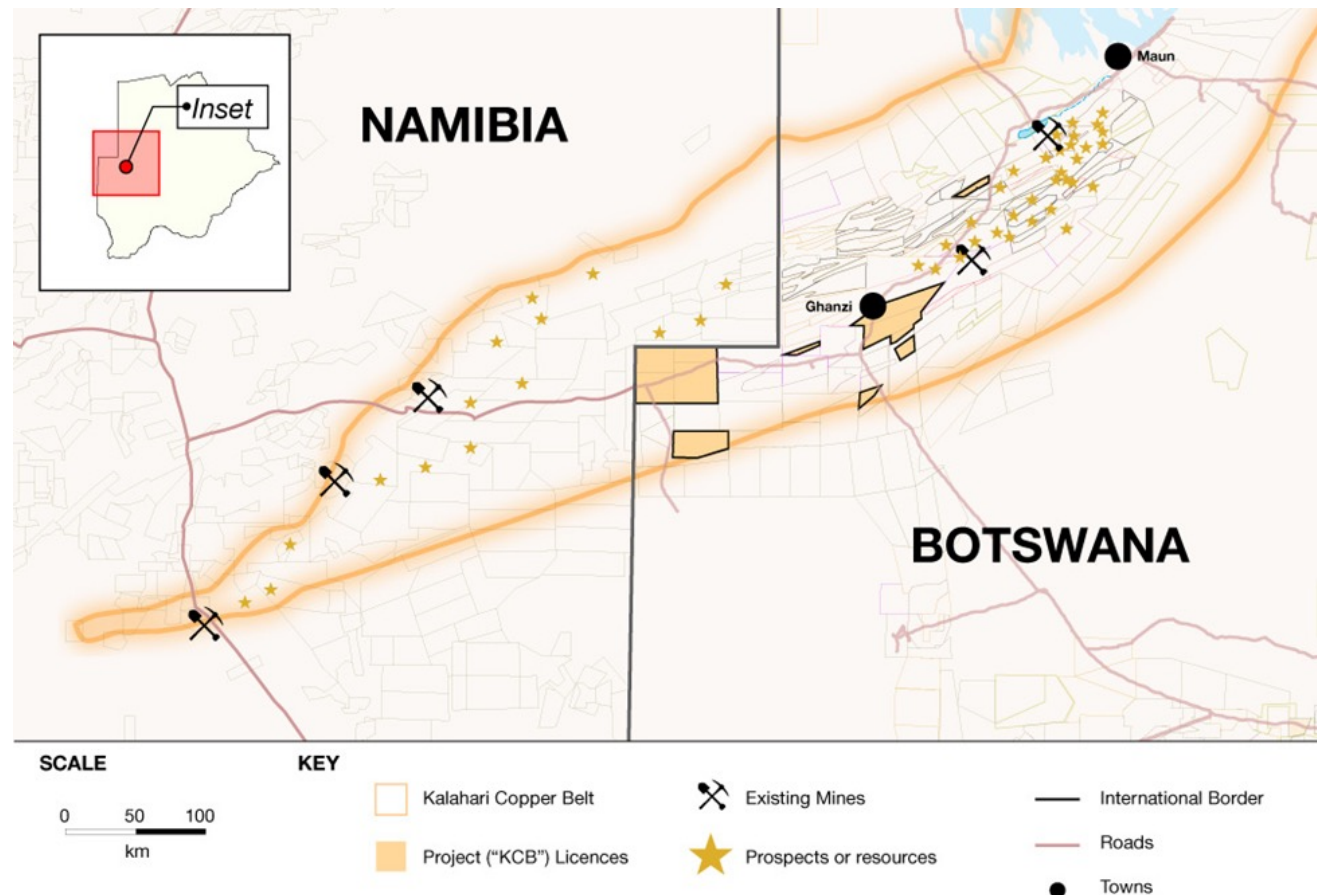
Assays pending; follow-up planned

Follow up geophysical surveying (CSAMT, Gravity, Mag) + additional drilling

Kalahari Copper Belt (“KCB”) Regional Setting



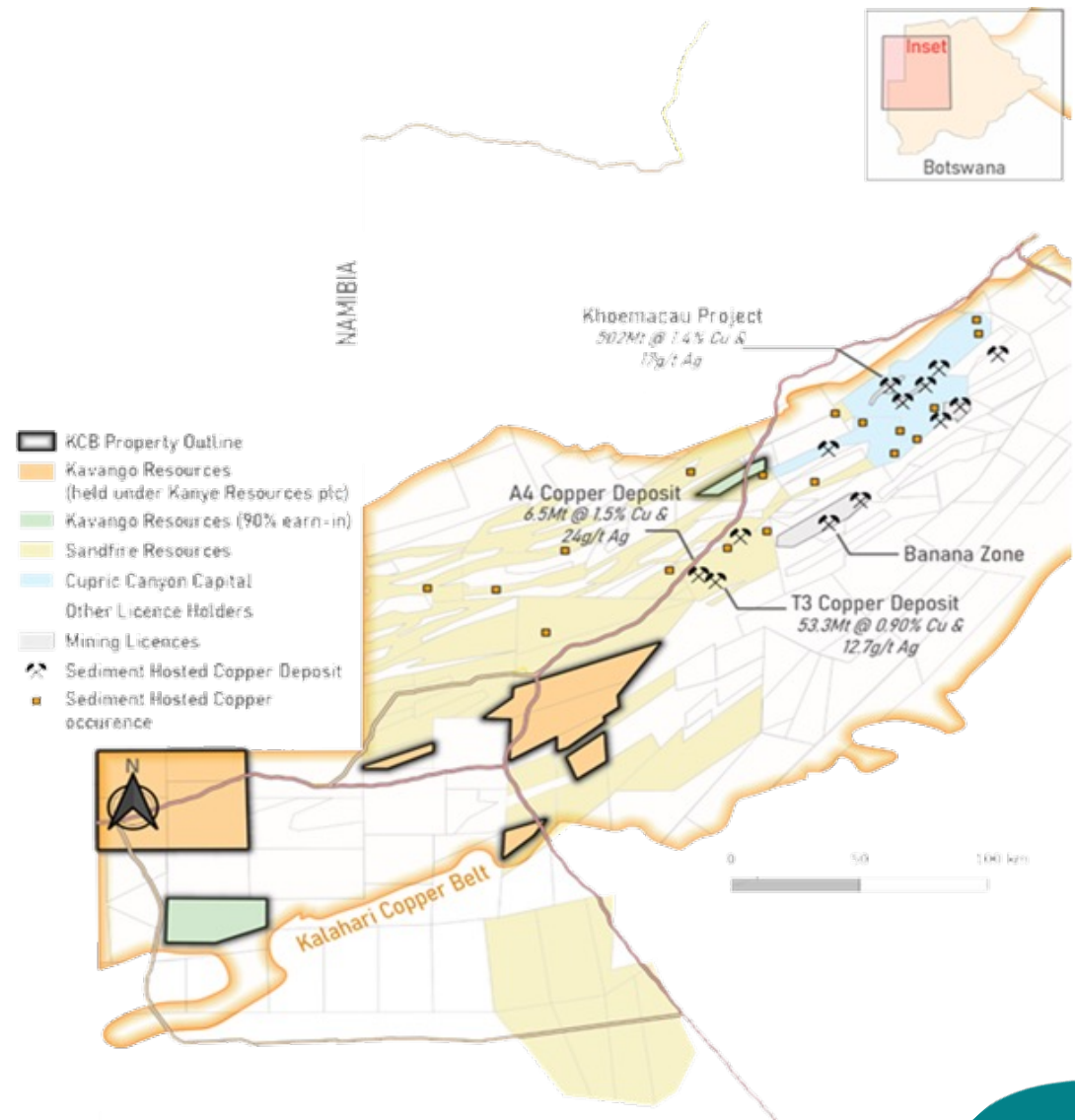
- The KCB is a rapidly developing NE-SW trending sedimentary copper basin which extends from northeast Botswana into western Namibia.
- The southwestern part of the KCB in Botswana has been overlooked due to thickening sand cover in this direction. Total resources to date within the belt exceed 8Mt Cu.
- Sandfire Resources (\$1B MCAP) and Cupric Canyon are leading exploration and mine development within the KCB. Kanye has interests in a large strategic land package among these major copper developers.
- Kanye is using high resolution airborne EM surveys combined with soil sampling, shallow seismics, and CSAMT, to identify mineral deposits beneath thin Kalahari sand cover.



Kalahari Copper Belt (“KCB”)



- 12 Prospecting Licences (PLs) covering 5,257km² within the Kalahari Copper Belt; 2 PLs held by LVR Ltd – (Kavango earning 90%, plan to transfer to Kanye); 10 PLs held by Kanye Resources – (Kavango 100% after a successful JV with Power Metal Resources). Kavango/Kanye is the operator on all PLs.
- Competition is intense for licences, which are becoming fragmented to the NE due to repeated relinquishments and relicensing
- Kanye has multiple, and typically large licences spanning the central axis of the KCB
- On these Kanye has already identified prospective geology, and is rapidly advancing towards drill-ready status, ranking targets
- The addition of four large PLs near the Botswana-Namibia border provides Kanye with a new and exciting exploration play where a structural dome has exposed a highly prospective “redox” boundary between the Ngwako Pan and D’kar Formation.



KCB Characteristics of Common Deposit Types



- KCB mineralisation primary controls: Lower D'kar Formation stratigraphy, plus structural overprint for high grade mineralisation.
- Commonly localised in reduced horizons in the lower D'kar Formation and above the oxidised Ngwako Formation.
- Remobilised into the limbs of anticlinal dome and basin structures, and/or locally remobilised along cross cutting structures into higher levels of the D'kar into high grade veins and shear zones.

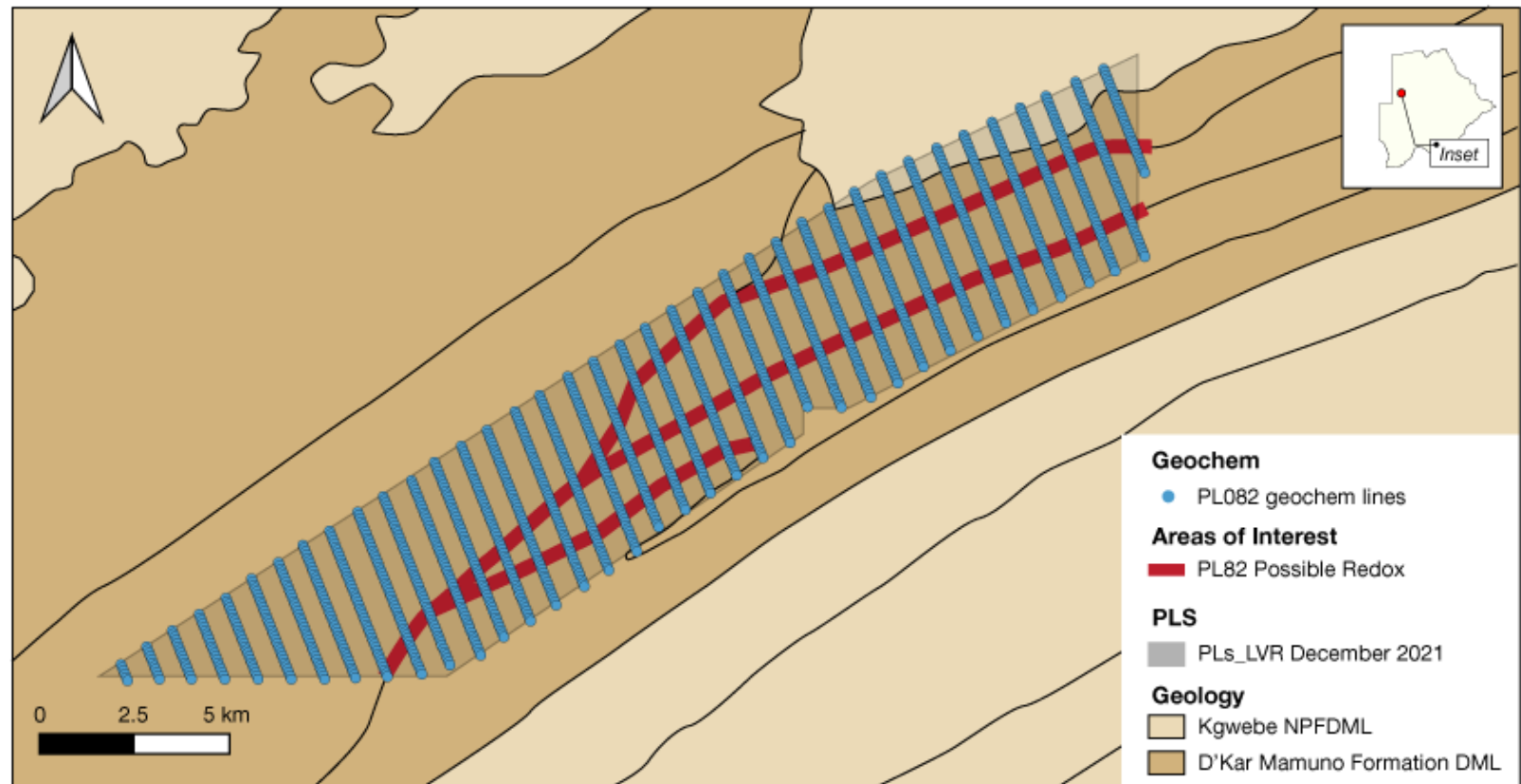
Deposit	Host Rocks	Structures	Mineralisation Style	Mineralogy	Discovery Technique	Target Physical Parameters
Zeta, Plutus, Zone 5	D'kar Sandstone and Mudstones	Mineralisation close to the D'kar NPF contact. Bound between the NPF and a carbonaceous marker horizon.	Disseminated mineralisation plus oblique quartz veins. Medium grade. 1%<Resource Grade>2%	chalcocite, bornite	Aeromagnetics/ Geol Mapping Soil Geochemistry Drilling	Regional Geology and Structures Bedrock "Cu" mineralisation and pathfinder elements Redox boundary and mineralisation
Banana Zone, A1 & T23	D'kar Sandstone and Mudstones	Redox Horizon	Wide-spread Disseminated Chalcocite mineralisation. Generally lower grade. <1% cu	Chalcocite	Aeromagnetics Soil Geochemistry Drilling	Regional Geology and Structures Bedrock `cu `mineralisation and pathfinder elements Mineralisation
T3, A4	D'kar Sandstone and Mudstones	Anticlinal domes	High grade, vein hosted. Parasitic folds, shear zones and quartz veins. >2%	Chalcocite, chalcopyrite, bornite	Aeromagnetic Soil Geochemistry Airborne EM Drilling	Regional Geology and Structures Bedrock "Cu" mineralisation and pathfinder elements Anticlinal Domes Mineralisation

PL082 Comparable with Banana Zone Resource



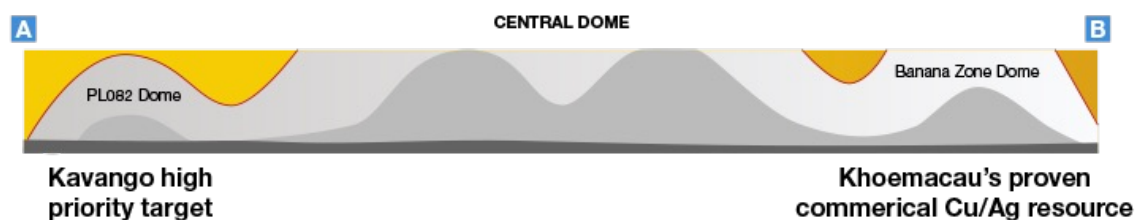
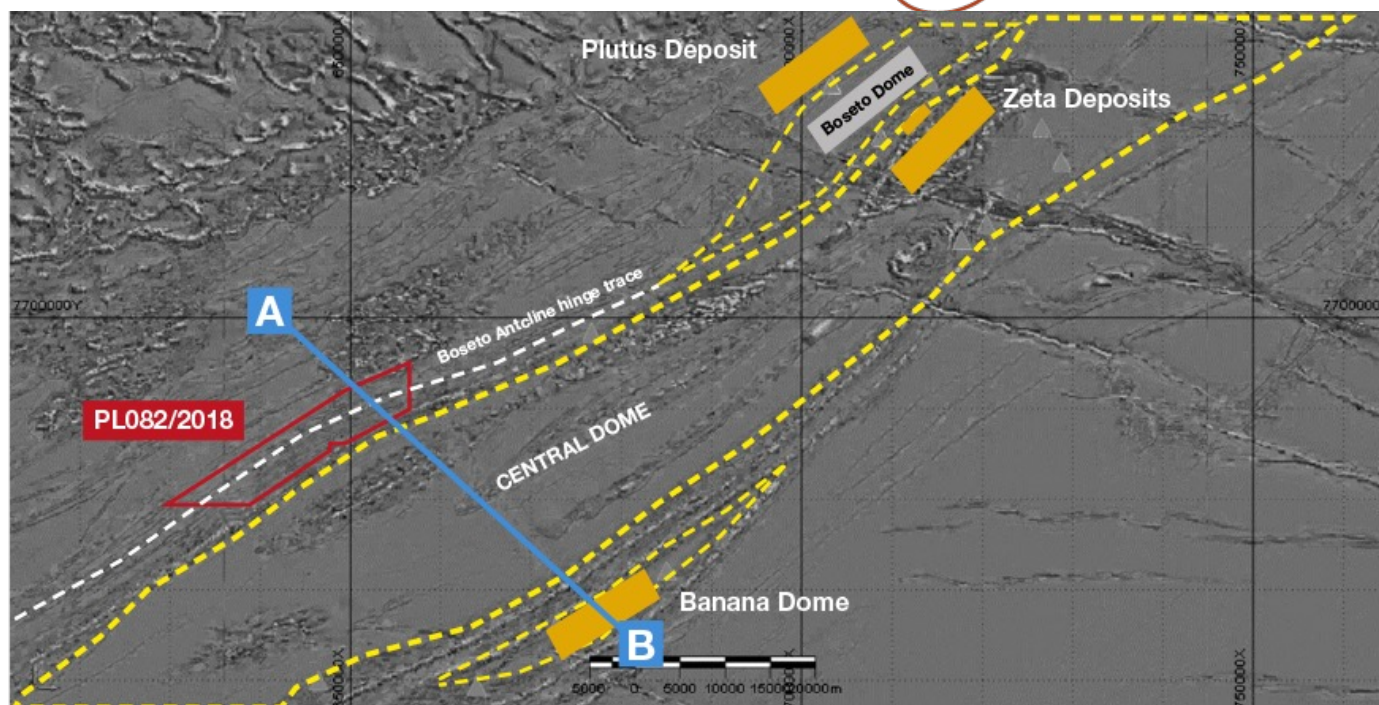
	Line Spacing	Sample Station Spacing	Total Samples
PL082/2018	800m	50	3178

- Located in NE heart of the KCB
- Kanye 90% earn-in with local company
- AEM suggests licence area is analogous to the Banana Zone deposit
- Soil sampling & geological mapping are advanced
- Opportunity for early drill targets



PL082 Structural Overview

- PL082/2018 lies along strike on the same anticline that host Cupric Canyon's Plutus & Zeta deposits
- Target area appears smaller at surface
- Geological position appears to mirror position of the Banana Zone Cu/Ag commercial deposit on the other side of the Central Dome of Ghanzi Ridge
- Drilling planned H2 2022



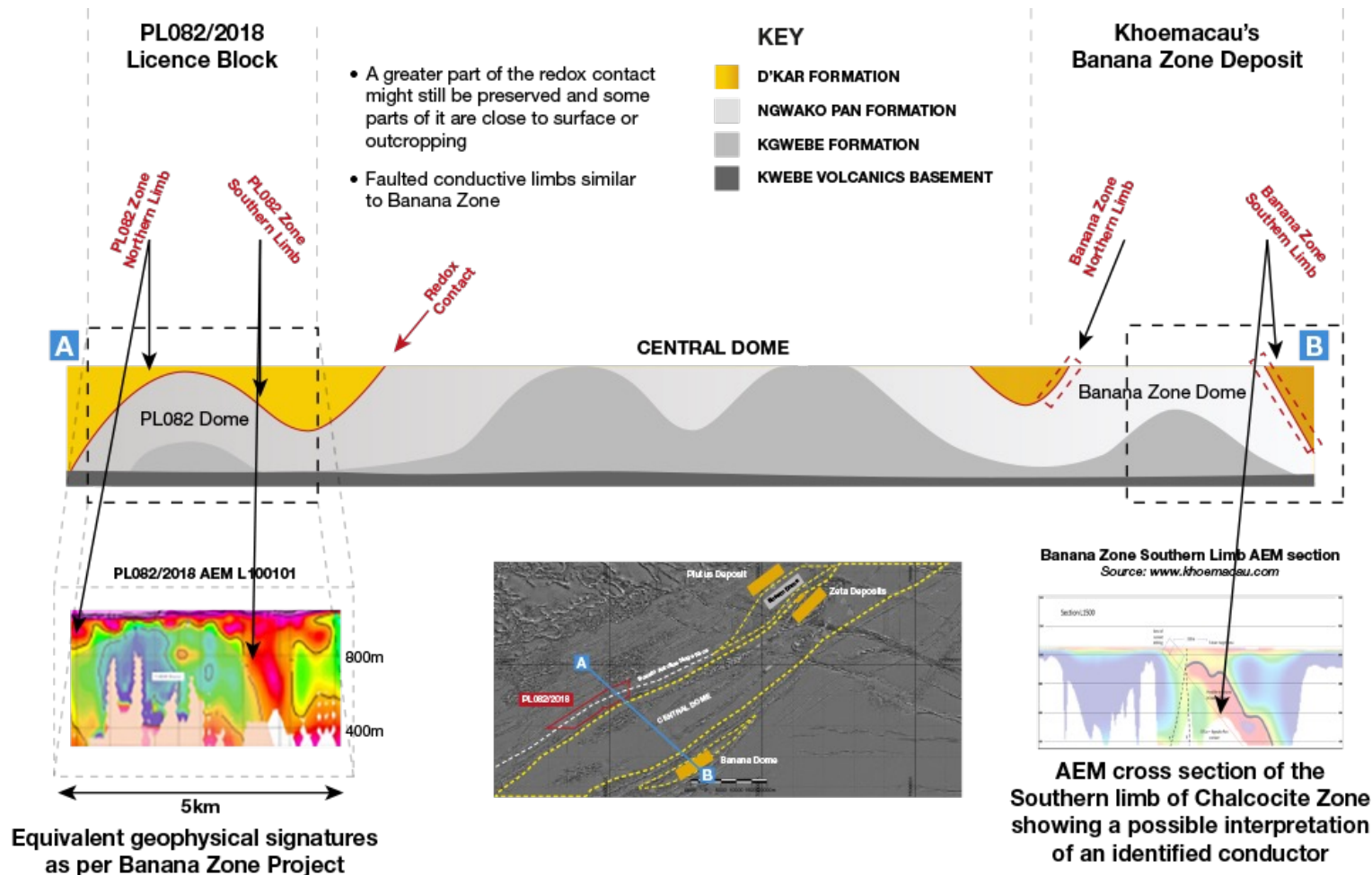
KEY

■	D'KAR FORMATION
■	NGWAKO PAN FORMATION
■	KGWEBE FORMATION
■	KWEBE VOLCANICS BASEMENT

Relative positions of PL082 and the Banana Zone commercial deposit (55.8Mt @ 1.1% Cu & 16.4g/t Ag), across the Central Dome

PL082 Mirror Image of Banana Zone Deposit Model

AEM section Line 101001 over PL082/2018 and an insert from Banana Zone AEM section, showing similar geophysical signatures.



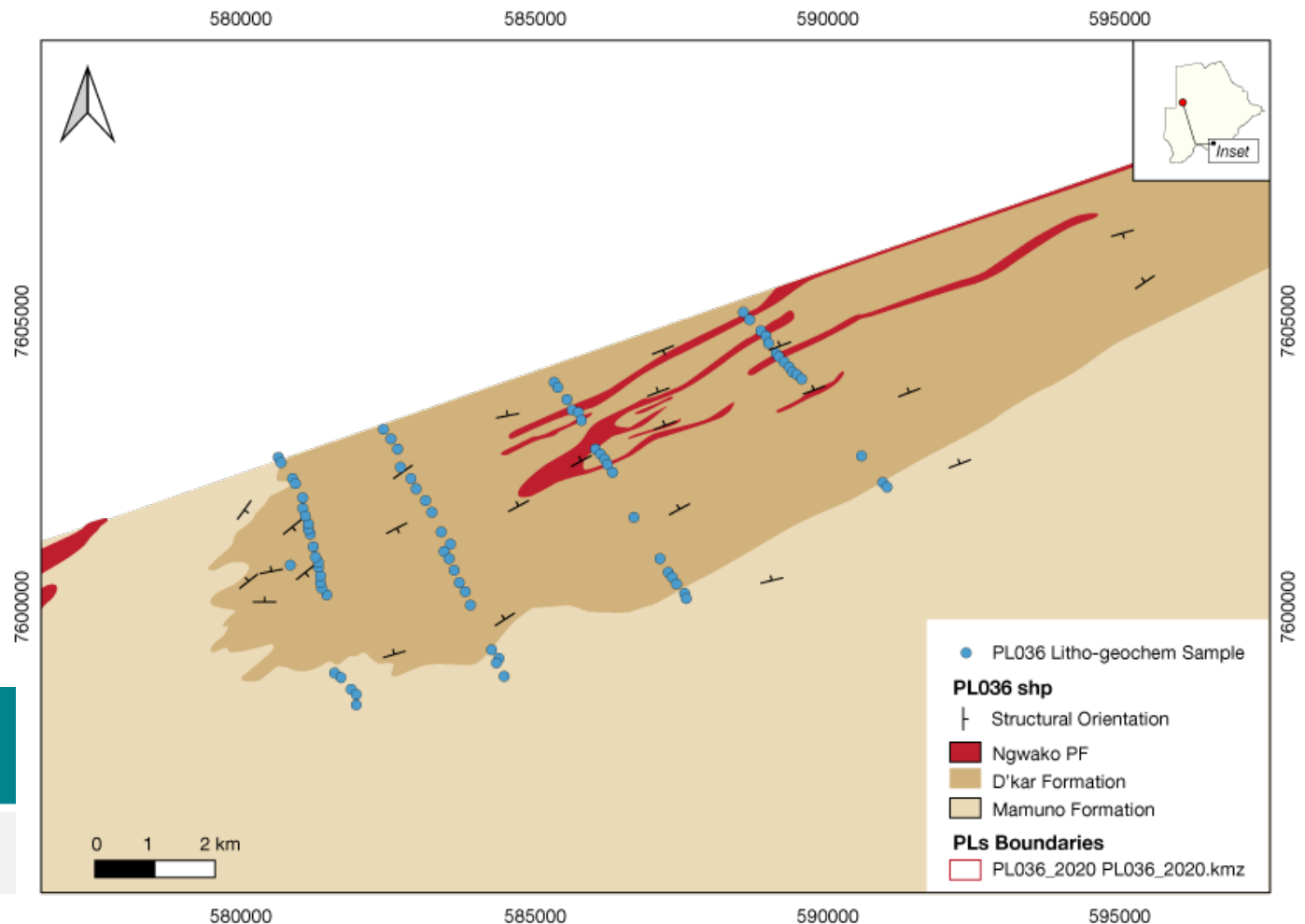
PL036 Geological Mapping, Soil Sampling



Repeated Ngwako Pan-D'Kar formation contacts identified through Kavango mapping

- Redox Horizon on the southern limb of the Acacia anticline Acacia Fold nose
- Possible prospective lithology repetition, domes, as seen on mines elsewhere on KCB
- Possible structural repetition: Thrusting or folding
- Major soil sampling program ongoing. To be followed by RC drill program

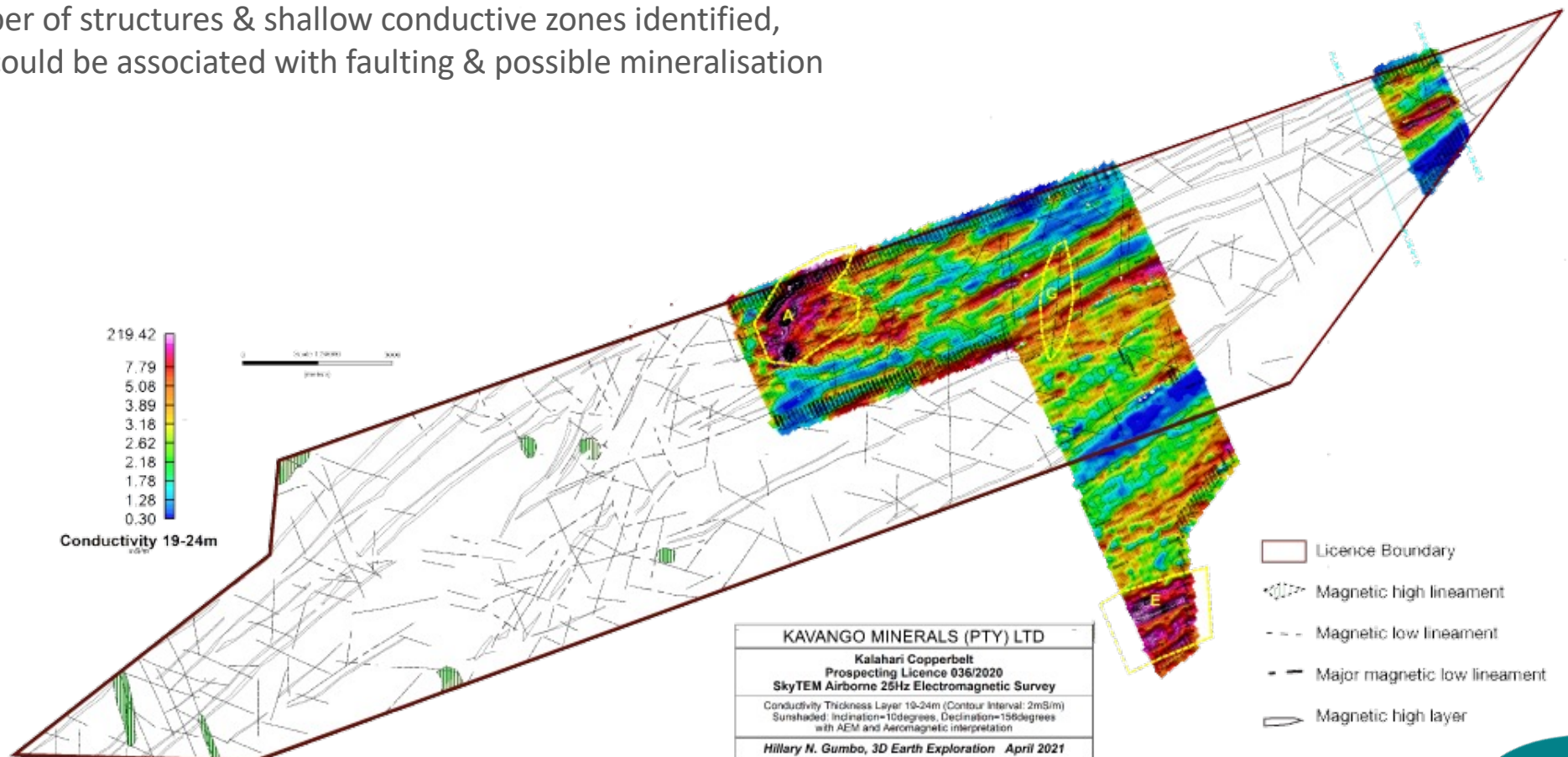
	Line Spacing	Sample Station Spacing	Total Samples
PL036/2018	400-800m	50	5180



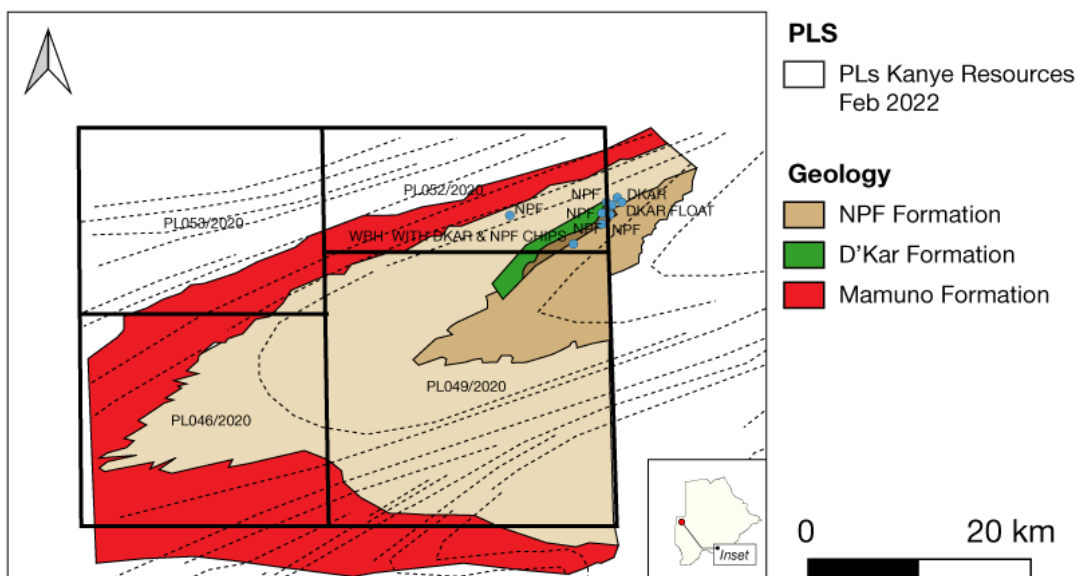
PL036 2020 AEM Conductivity Depth Slice



- SkyTem survey flown over property
- Airborne Magnetic Time Domain data acquired
- Survey has elucidated predominantly ENE-WSW striking regional trends/folding, critical to identification of the D'Kar/Ngwako Pan copper bearing horizon
- A number of structures & shallow conductive zones identified, which could be associated with faulting & possible mineralisation

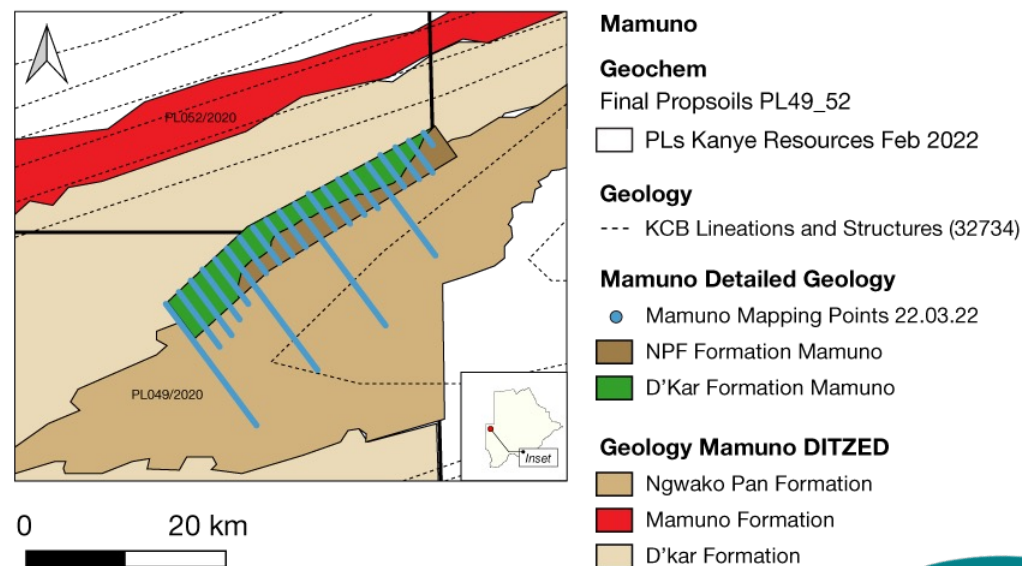


Mamuno PLs adjacent to Namibian border



- These four licences form a large contiguous block strategically located on the KCB
- Mineralisation known on both sides of border
- Minimal previous exploration & lack of regional AEM data, creating the opportunity for a new discovery
- D'kar/Ngwako Pan contact located by Kanye, soil sampling recently completed and to be followed up by geophysics

	Line Spacing	Sample Station Spacing	Total Samples
PL049/2020, PL052/2020	800-2000m	50	1319



Contact Details

Suite 425,
Salisbury House,
London Wall,
London,
EC2M 5PS

Ben Turney

CEO

bturney@kavangoresources.com

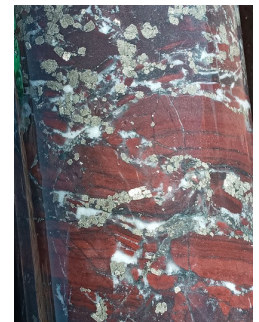
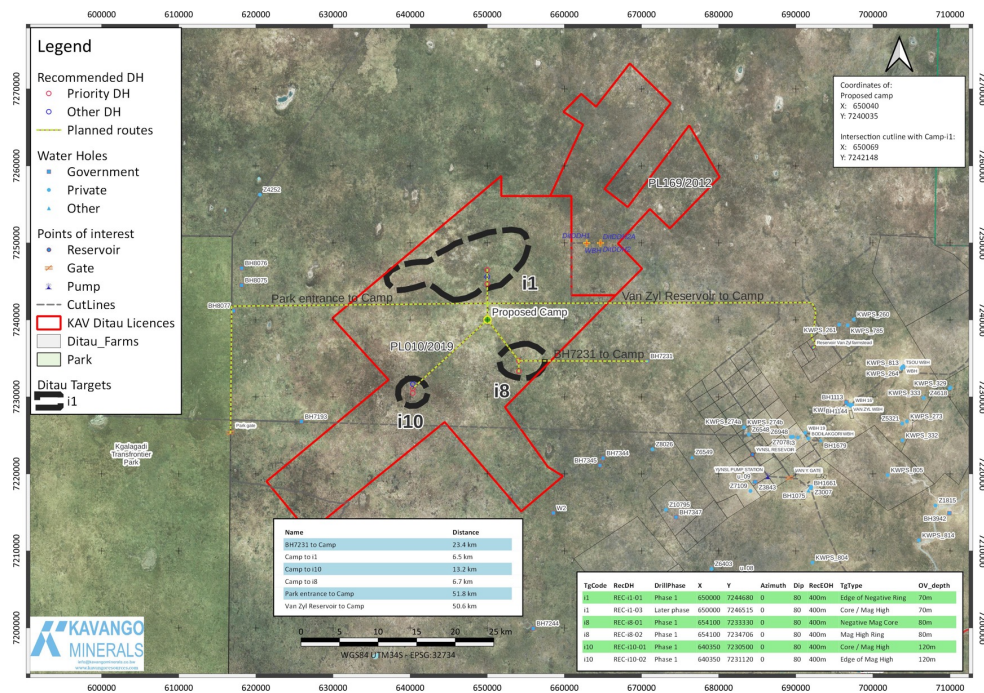
Brett Grist

COO

bgrist@kavangoresources.com



Ditau: Work completed to date & next steps



2022 Exploration Campaign

- Ground Mag complete
- CSAMT completed & ongoing
- 4-hole drill campaign completed (1,600m DC)
 - 2 holes each into Target i10, with 1 hole each into, i1 & i8

i10 drilling complete

- KSZDD004
 - Targeted centre of mag anomaly
 - 53m "Zone of Interest" from 293m to 346m
 - Precious metal potential